

# Bradford Building

400 Office Park Drive • Birmingham, AL 35223

FOR LEASE



## Office Space Available for Lease

### Features

- Available Space:
  - Suite 150 (911 SF)
  - Suite 170 (1,292 SF)
  - Suite 220 (1,487 SF)
- Excellent Midtown location
- Convenient location
- Parking ratio of 4.7 / 1,000
- Office is located in a beautiful natural setting
- Geo coded location
- Lease rate: **\$22.00/SF**



Wes Cline, CCIM • 205.515.7610 • [wes@hsccommercial.com](mailto:wes@hsccommercial.com)

Julie C. Baggett • [julie@hsccommercial.com](mailto:julie@hsccommercial.com)

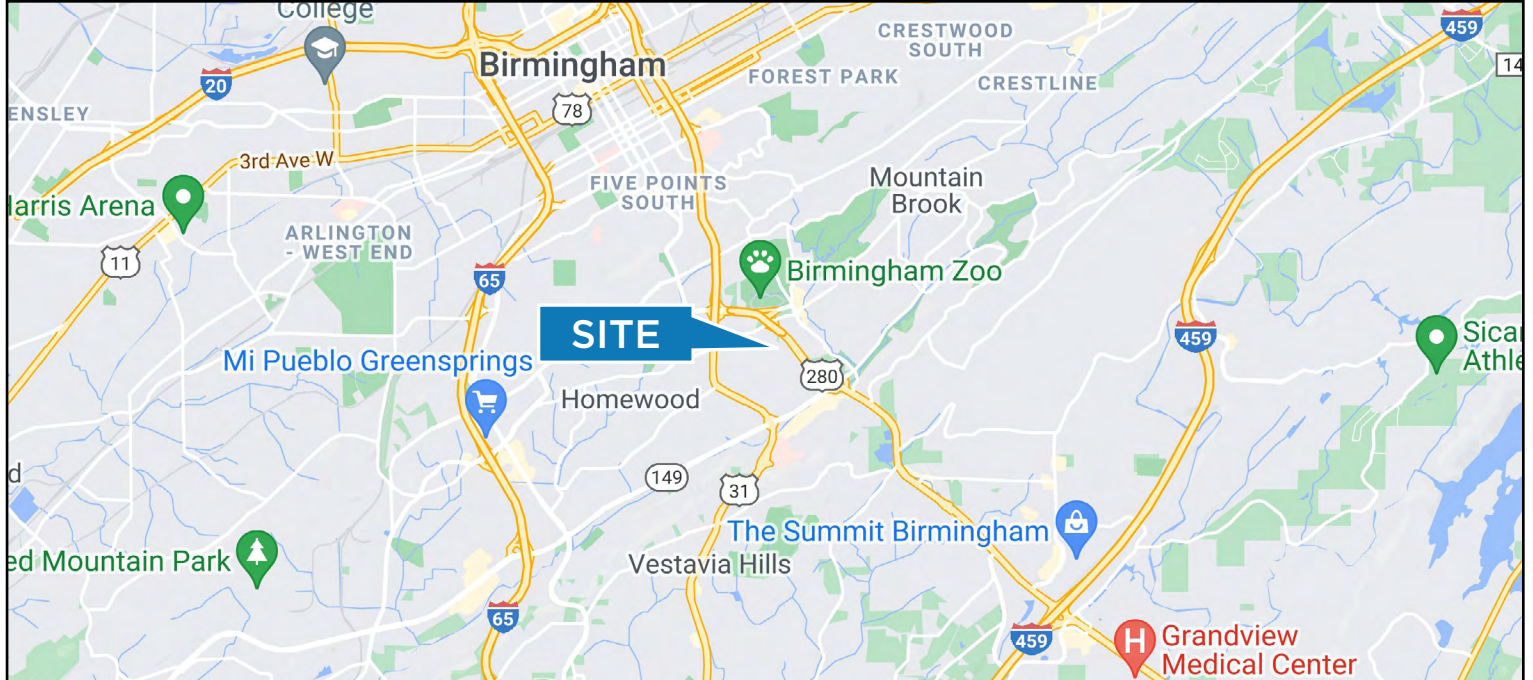
Elizabeth Gray • 205.410.5457 • [elizabeth@hsccommercial.com](mailto:elizabeth@hsccommercial.com)



# Bradford Building

400 Office Park Drive • Birmingham, AL 35223

FOR LEASE



Wes Cline, CCIM • 205.515.7610 • [wes@hsccommercial.com](mailto:wes@hsccommercial.com)

Julie C. Baggett • [julie@hsccommercial.com](mailto:julie@hsccommercial.com)

Elizabeth Gray • 205.410.5457 • [elizabeth@hsccommercial.com](mailto:elizabeth@hsccommercial.com)



# Bradford Building

400 Office Park Drive • Birmingham, AL 35223

FOR LEASE



Wes Cline, CCIM • 205.515.7610 • [wes@hsccommercial.com](mailto:wes@hsccommercial.com)

Julie C. Baggett • [julie@hsccommercial.com](mailto:julie@hsccommercial.com)

Elizabeth Gray • 205.410.5457 • [elizabeth@hsccommercial.com](mailto:elizabeth@hsccommercial.com)

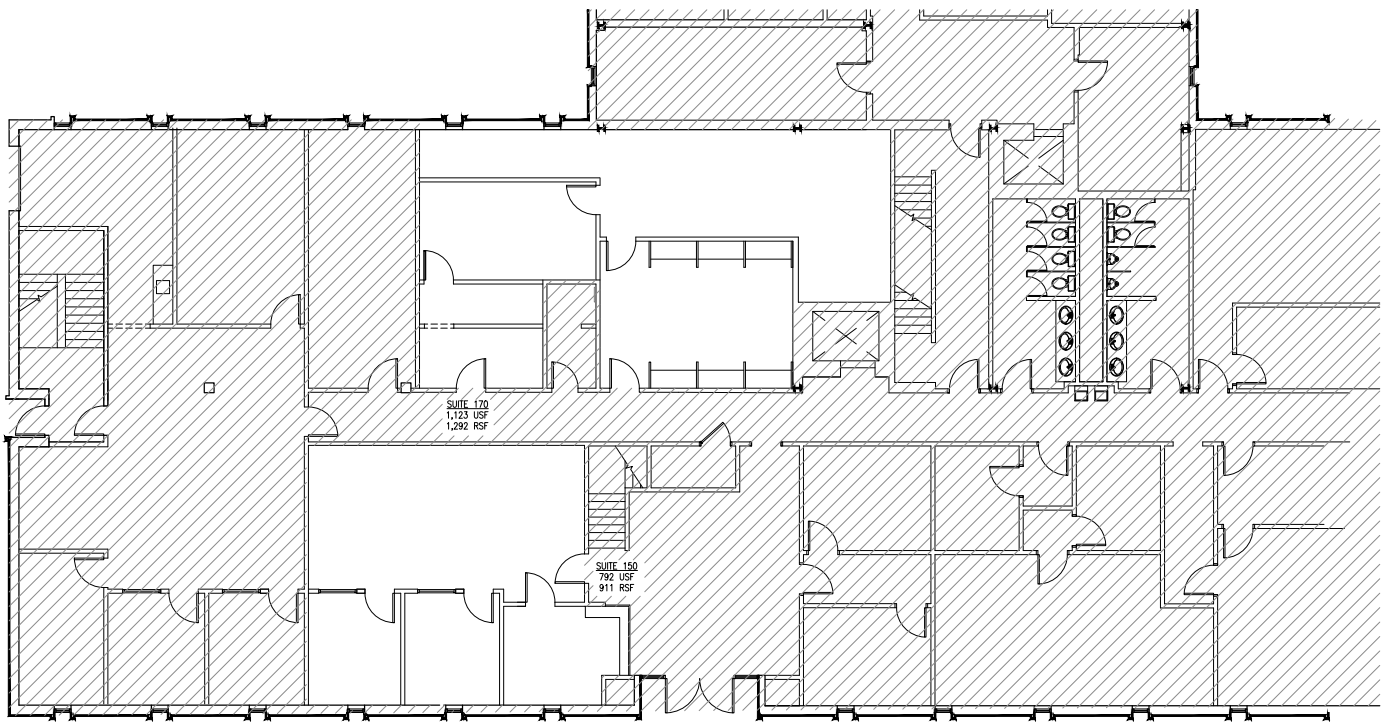


# Bradford Building

400 Office Park Drive • Birmingham, AL 35223

FOR LEASE

## Available Space



**Suite 150**  
911 SF

**Suite 170**  
1,292 SF

Wes Cline, CCIM • 205.515.7610 • [wes@hsccommercial.com](mailto:wes@hsccommercial.com)

Julie C. Baggett • [julie@hsccommercial.com](mailto:julie@hsccommercial.com)

Elizabeth Gray • 205.410.5457 • [elizabeth@hsccommercial.com](mailto:elizabeth@hsccommercial.com)

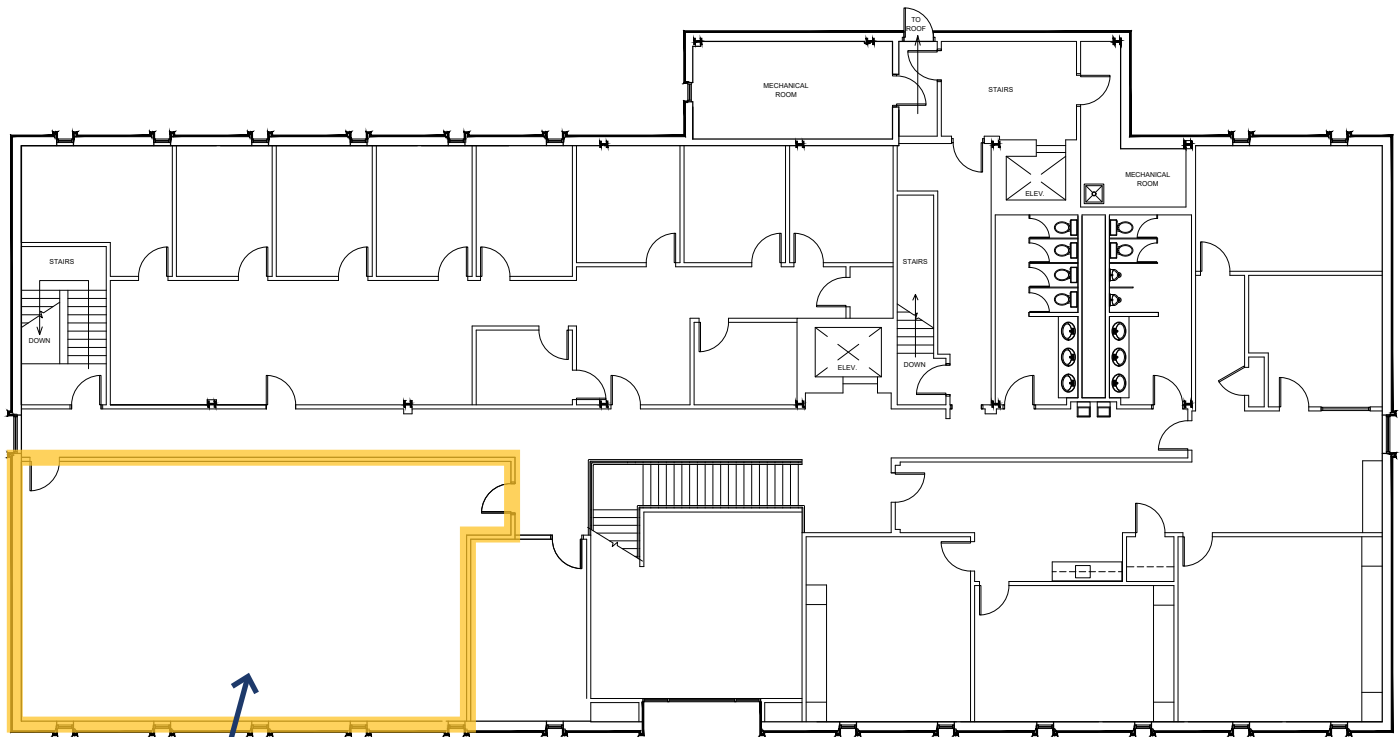


# Bradford Building

400 Office Park Drive • Birmingham, AL 35223

FOR LEASE

## Available Space



**Suite 220**  
1,487 SF

Wes Cline, CCIM • 205.515.7610 • [wes@hsccommercial.com](mailto:wes@hsccommercial.com)

Julie C. Baggett • [julie@hsccommercial.com](mailto:julie@hsccommercial.com)

Elizabeth Gray • 205.410.5457 • [elizabeth@hsccommercial.com](mailto:elizabeth@hsccommercial.com)

